



Mexico's #1 Professional Lighting Manufacturer

©2025 Jungo Lighting. All rights reserved. This material is protected by intellectual property laws.
Total or partial reproduction, distribution, or modification is prohibited without prior written authorization from Jungo Lighting.

2025-2026

Who **We Are**

At Jungo Industries, we manufacture professional LED lighting equipment under our Jungo Lighting brand and intelligent connectivity systems for the industry, through our innovative Jungo Connect® platform. Our solutions are designed to enhance efficiency, safety, and performance in demanding environments. With cutting-edge technology and a commitment to quality, we empower businesses to operate smarter and more sustainably.

From advanced industrial lighting to integrated IoT solutions, we provide the tools that help companies monitor, control, and optimize their operations in real time. Whether it's a factory floor, a warehouse, or a large-scale infrastructure project, our products are engineered to meet the highest standards of durability and intelligence.



Connect, Control, Optimize.



Whether for commercial or industrial spaces, Jungo Connect® gives you the possibility to fully automate your lighting, security and energy metering systems with the best technology, creating intelligent ecosystems and facilitating the control of each of your devices thanks to Jungo Connect® App. This allows facilities managers to optimize the administration and automation of lighting in industrial facilities.



100% Wireless



Mesh Technology



Remote Control



Personalized Scenes



jungo.lighting/connect

Industrial & Commercial

Urban

POLARIS SERIES



WATT SELECTABLE

Power	120W - 300W
Efficiency	175 Lm/W
CCT Adjustable	4000K, 5000K, 5700K

ORION SERIES



WATT SELECTABLE

Power	115W - 420W
Efficiency	170 Lm/W
CCT Adjustable	4000K, 5000K

TRI-PROOF V2 SERIES



WATT SELECTABLE

Power	10W - 70W
Efficiency	160 Lm/W
CCT Adjustable	3000K, 4000K, 5000K

PANEL SERIES



WATT SELECTABLE

Power	30W - 50W
Efficiency	130 Lm/W
CCT Adjustable	3000K, 4000K, 5000K

AREA LIGHT SERIES



WATT SELECTABLE

Power	60W - 400W
Efficiency	150 Lm/W
CCT Adjustable	3000K, 4000K, 5000K

HazLoc

A SERIES



Power	20W - 400W
Efficiency	140 Lm/W
CCT	4000K, 5000K
UL Standard	Class I, Division 2

B SERIES



Power	20W - 400W
Efficiency	140 Lm/W
CCT	5000K
UL Standard	Class I, División 2

FLF SERIES



Power	20W - 80W
Efficiency	140 Lm/W
CCT	4000K, 5000K
UL Standard	Class I, Division 2

H SERIES



Power	20W - 80W
Efficiency	140 Lm/W
CCT	4000K, 5000K
UL Standard	Class I, Division 2

O SERIES



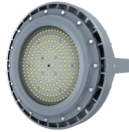
Power	20W - 40W
Efficiency	140 Lm/W
CCT	3000K, 4000K, 5000K
UL Standard	Class I, Division 2

R SERIES



Power	20W - 60W
Efficiency	140 Lm/W
CCT	4000K, 5000K
UL Standard	Class I, Division 2

C SERIES



Power	40W - 280W
Efficiency	140 Lm/W
CCT	5000K
UL Standard	Class I, Division 1

D SERIES



Power	20W - 200W
Efficiency	140 Lm/W
CCT	4000K, 5000K
UL Standard	Class I, Division 1

EXS03-A



Power	10W
Efficiency	130 Lm/W
CCT	5000K
UL Standard	Class I, Division 1

EXS03-B



Power	10W
Efficiency	130 Lm/W
CCT	5000K
UL Standard	Class I, Division 1

I SERIES



Power	20W - 120W
Efficiency	140 Lm/W
CCT	4000K, 5000K
UL Standard	Class I, Division 1

HT SERIES



Power	80W - 600W
Efficiency	150 Lm/W
CCT	5000K

EXS02-A



Power	6W
Efficiency	130 Lm/W
CCT	5000K

EXS02-A



Power	6W
Efficiency	130 Lm/W
CCT	5000K

Sports Lighting

STADIUM SERIES



Power	600W - 800W
Efficiency	160 Lm/W
CCT	5000K

SPORT LIGHT SERIES



Power	300W - 1200W
Efficiency	160 Lm/W
CCT	5000K

SP9.5-S1 SERIES



Power	400W - 600W
Efficiency	150 Lm/W
CCT	3000K, 4000K, 5000K, 5700K, RGB, RGBW

ATHENA SERIES



Power	200W - 1200W
Efficiency	120 Lm/W
CCT	2700K, 3000K, 4000K, 5000K, 5700K, 6500K

FL04-S SERIES



Power	300W - 500W
Efficiency	170 Lm/W
CCT	3000K, 4000K, 5000K, 5700K, 6500K

Let's Bring Your Project to Life

Get a Quote Now

hello@jungo.lighting ☎ +52 81 1502 6590

WARRANTIES



CERTIFICATIONS



Visit us at: [f](#) | [@](#) | [in](#) | [▶](#)



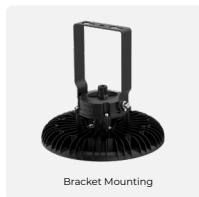
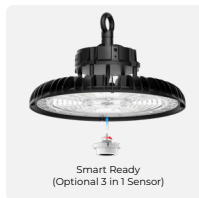
Industrial & Commercial

Discover in our High & Low Bay range the perfect solution for lighting everything from warehouses to workshops. With specific designs for high heights and smaller areas, these luminaires combine power, uniformity and energy efficiency, ensuring optimal visibility in all types of industrial environments.

- IP65
- IK08
- 175Lm/W
- Control System

POLARIS

SERIES



Control Systems

- 0-10V
- JUNGO CONNECT

Color Temperature Options

SELECTABLE CCT

- 4000K | 5000K | 5700K

Model	Selectable Power	Luminous flux
SO	120W 150W 200W	Max. 32,000 lumens
MO	200W 240W 300W	Max. 48,000 lumens



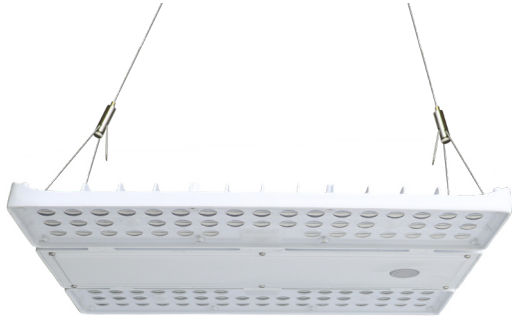
Technical Data

- Luminous efficacy: 175 LM/W
- Input Voltage: 100 - 277 V~
- Dimmable: 0 - 10 V
- IRC: >80
- Beam Angle: 60°, 90°
- Operating Temperature: -20 TO 50 °C
- Mounting: Suspension by chain, Surface-mounting bracket
- Optics: Borosilicate

- IP44
- IK08
- 170Lm/W
- Control System

ORION

SERIES



Control Systems

- 0-10V
- JUNGO CONNECT

Color Temperature Options

SELECTABLE CCT

- 4500K | 5000K

Model	Selectable Power	Luminous flux
SO	115W 130W 155W	Max. 26,350 lúmenes
MO	155W 180W 210W	Max. 35,700 lúmenes
HO	240W 270W 310W	Max. 52,700 lúmenes
SHO	310W 360W 420W	Max. 71,400 lúmenes



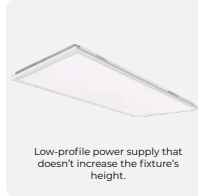
Technical Data

- Luminous efficacy: 170 LM/W
- Input voltage: 100 - 277 V- / 200 - 480 V-
- Dimmable: 0 - 10 V
- IRC: >80
- Beam Angle: 105°, 60° X 110°
- Operating Temperature: -40 A 50 °C
- Mounting: Hanging Kit (included)
- Optics: Polycarbonate

- IP40
- IK08
- 130Lm/W
- Control System

PANEL

SERIES



Control Systems

- 0-10V
- JUNGO CONNECT

Color Temperature Options

SELECTABLE CCT

- 3500K | 4000K | 5000K

Model	Selectable Power	Luminous flux
22	30 W 35 W 40 W	Max. 5,200 lumens
14	30 W 35 W 40 W	Max. 5,200 lumens
24	35 W 40 W 50 W	Max. 6,500 lumens



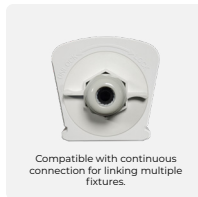
Technical Data

- Luminous efficacy: 130 LM/W
- Input Voltage: 100 - 277 V-
- Dimmable: 0 - 10 V
- IRC: >80
- Beam Angle: 120°
- Operating Temperature: -20 TO 50 °C
- Mounting: Recessed (included), Suspension pendant kit, Surface mounting kit
- Optics: Acrylic (PMMA)

IP65 IK08 160Lm/W Control System

TRI-PROOF V2

SERIES



Control Systems

0-10V JUNGO CONNECT

Color Temperature Options

SELECTABLE CCT

3500K | 4000K | 5000K

Model	Selectable Power	Luminous Flux
2FT	10 W 15 W 20 W	3,200 lumens
4FT	20 W 30 W 40 W	6,400 lumens
8FT	35 W 52 W 70 W	11,200 lumens



Technical Data

Luminous efficacy:	160 LM/W
Input Voltage:	100 - 277 V- (Multi-voltage)
Dimmable:	0 - 10 V
IRC:	>80
Beam Angle:	120°
Operating Temperature:	-20 TO 50 °C
Mounting:	TP2 Surface mount (included), Suspension Pendant kit
Optics:	Polycarbonate



HazLoc

Safety and reliability. Our HazLoc luminaires are specially designed for classified areas, ensuring optimum performance in extreme conditions. Built with high-quality materials and rigorous engineering, they offer consistent illumination in environments exposed to dust, moisture, vibration, and flammable substances. With certifications that meet international safety standards, you can trust our solutions to deliver long-lasting reliability and peace of mind in the most demanding applications.

- IP66
- IK08
- 140Lm/W
- Control System

A SERIES

SERIES



IP66 Protected Hermetic Body



Rotable Bracket Available

Control Systems

0-10V

Color Temperature Options

SELECTABLE CCT

4000K | 5000K

Model	Luminous flux	Model	Luminous flux	Model	Luminous flux
20 W	2,800 lumens	100 W	14,000 lumens	300 W	42,000 lumens
40 W	5,600 lumens	150 W	21,000 lumens	400 W	56,000 lumens
60 W	8,400 lumens	200 W	28,000 lumens		
80 W	11,200 lumens	250 W	35,000 lumens		



Technical Data

Luminous efficacy:	140 LM/W
Input voltage:	100 - 277 V- / 200 - 480 V-
Dimmable:	0 - 10 V (Optional)
IRC:	>70
Beam Angle:	120°
Operating Temperature:	-40 TO 50 °C
Mounting:	Surface Mounted: Wall, Ceiling, Pole
Optics:	Borosilicate

IP66

IK08

140Lm/W

Control System

B SERIES

SERIES



IP66 Protected Hermetic Body



Rotable Bracket Available

Control Systems

0-10V

Color Temperature Options

FIXED CCT

5000K

Model	Luminous flux
20 W	2,800 lumens
40 W	5,600 lumens
60 W	8,400 lumens
80 W	11,200 lumens

Model	Luminous flux
100 W	14,000 lumens
120 W	16,800 lumens
150 W	21,000 lumens
200 W	28,000 lumens

Model	Luminous flux
250 W	35,000 lumens
300 W	42,000 lumens
400 W	56,000 lumens



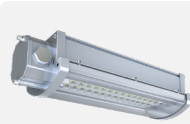
Technical Data

Luminous efficacy:	140 LM/W
Input Voltage:	100 - 277 V- / 200 - 480 V-
Dimmable:	0 - 10 V (Optional)
IRC:	>70
Beam Angle:	40°, 60°, 90°, 120°
Operating Temperature:	-40 TO 50 °C
Mounting:	Surface Mounted: Wall, Wall with Junction Box, Ceiling, Ceiling with Junction Box
Optics:	Borosilicate

- IP66
- IK10
- 140Lm/W
- Control System

FLF SERIES

SERIES



Compatible with motion and luminance sensor connection.



Compatible with continuous connection for linking multiple fixtures.

Control Systems

0-10V

Color Temperature Options

SELECTABLE CCT

4000K | 5000K

Model	Luminous flux
20 W	2,800 lumens
40 W	5,600 lumens
60 W	8,400 lumens
80 W	11,200 lumens



Technical Data

Luminous efficacy:	140 LM/W
Input voltage:	100 - 277 V~
Dimmable:	0 - 10 V (Optional)
IRC:	>70
Beam Angle:	120°
Operating Temperature:	-40 TO 65 °C
Mounting:	Surface Mounted: Wall, Ceiling, Pole
Optics:	Borosilicate

- IP66
- IK10
- 140Lm/W
- Control System

H SERIES

SERIES



Lightweight aerospace-grade aluminum design.



IP66 Protected Hermetic Body

Control Systems

0-10V

Color Temperature Options

SELECTABLE CCT

4000K | 5000K

Model	Power rating	Luminous flux
2FT - 20	20 W	2,800 lumens
2FT - 40	40 W	5,600 lumens
4FT - 40	40 W	5,600 lumens
4FT - 60	60 W	8,400 lumens
4FT - 80	80 W	11,200 lumens



Technical Data

- Luminous efficacy: 140 LM/W
- Input Voltage: 100 - 277 V- / 200 - 480 V-
- Dimmable: 0 - 10 V (Optional)
- IRC: >70
- Beam Angle: 120°
- Operating Temperature: -40 TO 60 °C
- Mounting: U-Bracket (included), Suspended with 3/4" NTP Pipe
- Optics: Borosilicate

IP66

IK10

140Lm/W

Control System

O SERIES

SERIES



IP66 Protected Hermetic Body



Available with 3 mounting options.

Control Systems

0-10V

Color Temperature Options

SELECTABLE CCT

3000K | 4000K | 5000K

Model	Power rating	Luminous flux
EXO-20	20W	2,800 lumens
EXO-40	40 W	5,600 lumens



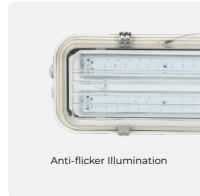
Technical Data

Luminous efficacy:	140 LM/W
Input voltage:	100 - 277 V~
Dimmable:	0 - 10 V (Optional)
IRC:	>70
Beam Angle:	120°
Operating Temperature:	-40 TO 60 °C
Mounting:	Ceiling, Pole, and 90° Wall Mounting
Optics:	Polycarbonate

-  IP66
-  IK10
-  140Lm/W
-  Control System

R SERIES

SERIES



Anti-flicker Illumination



IP66 Protected Hermetic Body

Control Systems

0-10V

Color Temperature Options

SELECTABLE CCT

4000K | 5000K

Model	Power rating	Luminous flux
2FT - 20	20 W	2,800 lumens
2FT - 30	30 W	4,200 lumens
2FT - 40	40 W	5,600 lumens
4FT - 40	40 W	5,600 lumens
4FT-50	50 W	7,000 lumens
4FT-60	60 W	8,400 lumens



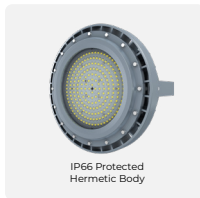
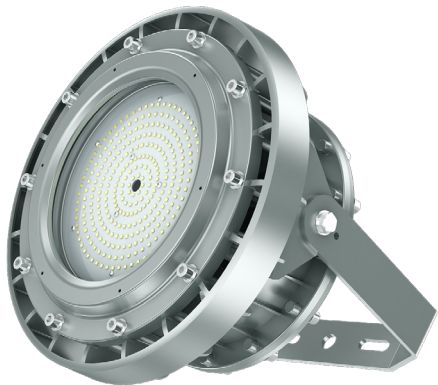
Technical Data

- Luminous efficacy: 140 LM/W
- Input Voltage: 100 - 277 V- / 200 - 480 V-
- Dimmable: 0 - 10 V (Optional)
- IRC: >70
- Beam Angle: 120°
- Operating Temperature: -40 TO 60 °C
- Mounting: Surface Mounted: Ceiling
- Optics: Borosilicate

-  IP66
-  IK08
-  140Lm/W
-  Control System

C SERIES

SERIES



IP66 Protected Hermetic Body



Rotable Bracket Available

Control Systems

0-10V

Color Temperature Options

FIXED CCT

 5000K

Model	Luminous flux	Model	Luminous flux
40 W	5,600 lumens	150 W	21,000 lumens
60 W	8,400 lumens	200 W	28,000 lumens
80 W	11,200 lumens	250 W	35,000 lumens
100 W	14,000 lumens	280 W	39,200 lumens



Technical Data

- Luminous efficacy: 140 LM/W
- Input voltage: 100 - 277 V~
- Dimmable: 0 - 10 V (Optional)
- IRC: >70
- Beam Angle: 60°, 90°, 120°
- Operating Temperature: -40 TO 50 °C
- Mounting: Bracket (Included), Suspended with 3/4" NTP Pipe
- Optics: Borosilicate

- IP66
- IK10
- 140Lm/W
- Control System

D SERIES

SERIES



IP66 Protected Hermetic Body



Rotable Bracket Available

Control Systems

0-10V

Color Temperature Options

SELECTABLE CCT

4000K | 5000K

Model	Luminous flux	Model	Luminous flux
20 W	2,800 lumens	100 W	14,000 lumens
40 W	5,600 lumens	150 W	21,000 lumens
60 W	8,400 lumens	200 W	28,000 lumens
80 W	11,200 lumens		



Technical Data

- Luminous efficacy: 140 LM/W
- Input Voltage: 100 - 277 V- / 200 - 480 V-
- Dimmable: 0 - 10 V (Optional)
- IRC: >70
- Beam Angle: 120°
- Operating Temperature: -40 TO 55 °C
- Mounting: Bracket (included), Suspended with 3/4" NTP Pipe
- Optics: Borosilicate

IP66

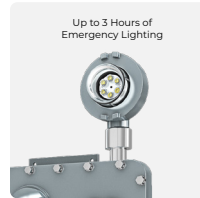
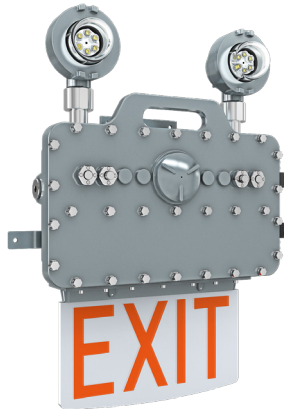
IK08

130Lm/W

Control System

EXS03-A

SERIES



Control Systems

0-10V

Color Temperature Options

FIXED CCT

5000K



Model	Power rating	Luminous flux
EXS03-A	10W	1,300 lumens

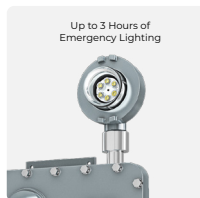
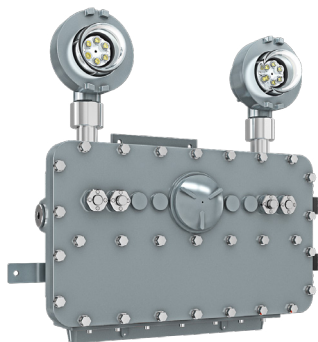
Technical Data

Luminous efficacy:	130 LM/W
Input voltage:	100 - 277 V~
Dimmable:	0 - 10 V
Beam Angle:	120°
Operating Temperature:	-20 TO 60 °C
Mounting:	Surface Mounted: Wall base (included)
Optics:	Polycarbonate

- IP66
- IK08
- 130Lm/W
- Control System

EXS03-B

SERIES



Control Systems

0-10V

Color Temperature Options

FIXED CCT

5000K



Technical Data

Luminous efficacy:	130 LM/W
Input Voltage:	100 - 277 V~
Dimmable:	0 - 10 V
Beam Angle:	120°
Operating Temperature:	-20 TO 60 °C
Mounting:	Surface Mounted: Wall base (included)
Optics:	Polycarbonate

Model	Power rating	Luminous flux
EXS03-B	10 W	1,300 lumens

IP66

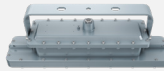
IK08

140Lm/W

Control System

I SERIES

SERIES



Bracket Mount Available



IP66 Protected Hermetic Body

Control Systems

0-10V

Color Temperature Options

SELECTABLE CCT

4000K | 5000K

Model	Luminous flux
20 W	2,800 lumens
40 W	5,600 lumens
60 W	8,400 lumens
80 W	11,200 lumens

Model	Luminous flux
100 W	14,000 lumens
120 W	16,800 lumens



Technical Data

Luminous efficacy:	140 LM/W
Input voltage:	100 - 277 V-
Dimmable:	0 - 10 V (Optional)
IRC:	>70
Beam Angle:	120°
Operating Temperature:	-40 TO 60 °C
Mounting:	U-Bracket (Included)
Optics:	Polycarbonate

- IP66
- IK08
- 150Lm/W
- Control System

HT SERIES

SERIES



Bracket Mount Available



IP66 Protected Hermetic Body

Control Systems

0-10V

Color Temperature Options

FIXED CCT

5000K

Model	Luminous flux
80 W	12,000 lumens
100 W	15,000 lumens
150 W	22,500 lumens
200 W	30,000 lumens

Model	Luminous flux
300 W	45,000 lumens
400 W	60,000 lumens
500 W	75,000 lumens
600 W	90,000 lumens



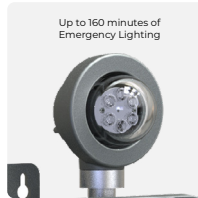
Technical Data

Luminous efficacy:	150 LM/W
Input Voltage:	100 - 277 V- / 200 - 480 V-
Dimmable:	0 - 10 V (Optional)
IRC:	>70
Beam Angle:	120°
Operating Temperature:	-40 TO 70 °C
Mounting:	Surface Mounted: Wall, Wall with Junction Box, Ceiling, Ceiling with Junction Box
Optics:	Borosilicate

- IP66
- IK08
- 130Lm/W
- Control System

EXS02-A

SERIES



Control Systems

0-10V

Color Temperature Options

FIXED CCT

5000K

Model	Power rating	Luminous flux
EXS02-A	6 W	780lumens



Technical Data

Luminous efficacy:	130 LM/W
Input voltage:	100 - 277 V~
Dimmable:	0 - 10 V
Beam Angle:	120°
Operating Temperature:	-20 TO 60 °C
Mounting:	Surface Mounted: Wall base (included)
Optics:	Polycarbonate

-  IP66
-  IK08
-  130Lm/W
-  Control System

EXS02-B

SERIES



Up to 160 minutes of Emergency Lighting



IP66 Protected Hermetic Body

Control Systems

0-10V

Color Temperature Options

FIXED CCT

 5000K

Model	Power rating	Luminous flux
EXS02-B	6 W	780 lumens



Technical Data

Luminous efficacy:	130 LM/W
Input Voltage:	100 - 277 V-
Dimmable:	0 - 10 V
Beam Angle:	120°
Operating Temperature:	-20 TO 60 °C
Mounting:	Surface Mounted: Wall base (included)
Optics:	Polycarbonate



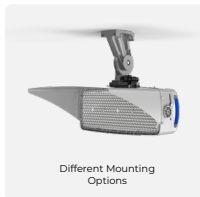
Sports Lighting

Maximize visibility with our Flood & High Mast luminaires, perfect for large areas and compatible with super poles. Ideal for sports facilities and outdoor events, they offer high-powered illumination, durability and a design that integrates seamlessly with large structures.

JUNGO PROFESSIONAL LIGHTING | SPORTS LIGHTING

IP66 IK08 160Lm/W Control System

STADIUM SERIES



Control Systems

0-10V JUNGO CONNECT

Color Temperature Options

FIXED CCT

5000K

Model	Selectable Power	Luminous flux
FLEX	600 W 700 W 800 W	Max 128,000 lumens



Technical Data

Luminous efficacy:	160 LM/W
Input voltage:	100 - 277 V~
Dimmable:	0 - 10 V
IRC:	>80
Beam Angle:	15°, 20°, 40°, 60°
Operating Temperature:	-30 TO 50 °C
Mounting:	Bracket (Included), Top Mounting Arm (Optional)
Optics:	Borosilicate

IP66

IK08

160Lm/W

Control System

SPORT SERIES



Optional Light Barrier



Rotable Bracket
up to 270°

Control Systems

0-10V

JUNGO CONNECT

Color Temperature Options

FIXED CCT

5000K

Model	Power rating	Luminous flux
SO	300 W	48,000 lumens
MO	600 W	96,000 lumens
HO	900 W	144,000 lumens
SHO	1200 W	192,000 lumens



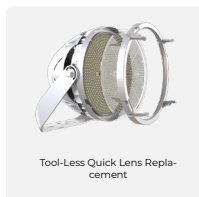
Technical Data

Luminous efficacy:	160 LM/W
Input voltage:	100 - 277 V~
Dimmable:	0 - 10 V
IRC:	>80
Beam Angle:	30°, 60°, 90°, 120°
Operating Temperature:	-30 TO 50 °C
Mounting:	Bracket, Superpost
Optics:	Borosilicate

- IP66
- IK08
- 160Lm/W
- Control System

SP 9.5

SERIES



Control Systems

- 0-10V
- DMX
- DALI

Color Temperature Options

- RGB
- RGB+W
- FIXED



SELECTABLE CCT

- 3000K | 4000K | 5000K
- 5700K | 6500K

Model	Selectable Power	Luminous flux
SO	300 W 400 W 500 W	Max 80,000 lumens
MO	680 W 750 W 800 W	Max 128,000 lumens



Technical Data

- Luminous efficacy: 160 LM/W
- Input Voltage: 100 - 277 V~
- Dimmable: 0 - 10 V
- IRC: >80
- Beam Angle: 15°, 20°, 30°, 45°, 60°
- Operating Temperature: -30 TO 50 °C
- Mounting: U-bracket, SF-bracket
- Optics: Borosilicate

IP66

IK08

125Lm/W

Control System

ATHENA

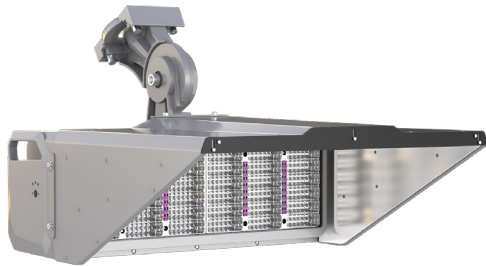
SERIES



Lens & Glass
Double Protection



Built-in RGB Modes



Control Systems

0-10V

DMX

DALI

Color Temperature Options

RGB

RGB+W

FIXED



SELECTABLE CCT



2700K | 3000K | 4000K
5000K | 5700K | 6500K

Model	Wattage	Luminous flux
SO	200W	Max 25,000 lumens
MO	300W	Max 37,500 lumens
HO	800W	Max 100,000 lumens
SHO	1200W	Max 150,000 lumens



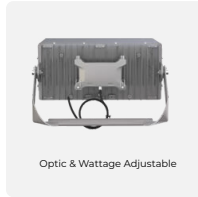
Technical Data

Luminous efficacy:	125 LM/W
Input voltage:	100 - 277 V~
Dimmable:	0 - 10 V
IRC:	>70
Beam Angle:	15°, 20°, 30°, 40° 55°
Operating Temperature:	-30 TO 50 °C
Mounting:	U-Bracket, Top Mounting Arm
Optics:	Polycarbonate+Glass

IP66 IK08 170Lm/W Control System

FL04 mini

SERIES



Control Systems

0-10V DMX DALI

Color Temperature Options

RGB RGB+W FIXED



SELECTABLE CCT

3000K | 4000K | 5000K
5700K

Model	Selectable Power	Luminous flux
SO	400 W 500 W 600 W	Max 84,000 lumens
MO	800 W 1000 W 1200 W	Max 168,000 lumens
HO	1500 W	Max 210,000 lumens



Technical Data

Luminous efficacy:	170 LM/W
Input Voltage:	100 - 277 V-
Dimmable:	0 - 10 V
IRC:	70/ 80/ 90, TLCI > 90
Beam Angle:	10°, 15°, 20°, 30°, 40°, 60°, 90°, 120°, P40°NB, P40°MB, P40°WB, P40°SNB
Operating Temperature:	-30 TO 50 °C
Mounting:	Bracket
Optics:	Borosilicate



Urban Lighting

Enhance the safety, aesthetics, and functionality of modern cities with our advanced urban lighting solutions. Designed to blend seamlessly into contemporary landscapes, our luminaires offer superior energy efficiency, long-lasting performance, and smart control compatibility.

IP66

IK09

150Lm/W

Control System

AREA LIGHT SERIES



Easy-access maintenance door



Compatible with 2 1/2-inch tubes (64 mm diameter)

Control Systems

0-10V

SMART CITIES

Color Temperature Options

SELECTABLE CCT

3000K | 4000K | 5000K



Technical Data

Luminous efficacy:	150 LM/W
Input voltage:	100 - 277 V-
Dimmable:	0 - 10 V
IRC:	>80
Beam Angle:	T3 / T4 / T5
Operating Temperature:	-30 TO 50 °C
Mounting:	Surface Mounted: Round/Square Pole Bracket, Wall Bracket, Standard Bracket, Adjustable Pole Arm
Optics:	Polycarbonate

Model	Selectable Power	Luminous flux
SO	60W 80W 100W	Max. 15,000 lúmenes
MO	120W 150W 200W	Max. 30,000 lúmenes
HO	240W 300W 400W	Max. 60,000 lúmenes

JUNGO
PROFESSIONAL LIGHTING



Get a Quote Now

✉ hello@jungo.lighting

☎ +52 81 1502 6590

www.jungo.lighting

