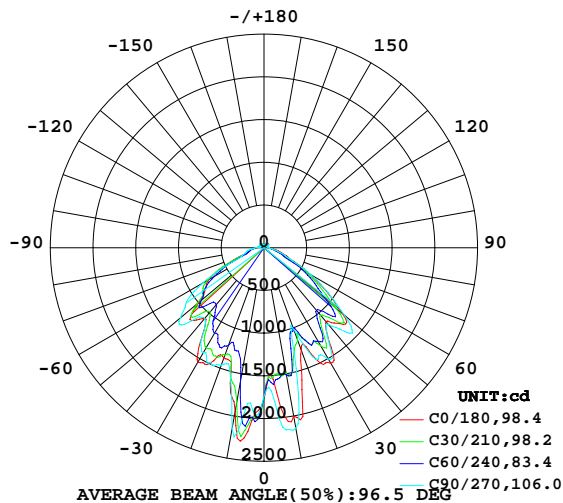


## LUMINAIRE PHOTOMETRIC TEST REPORT

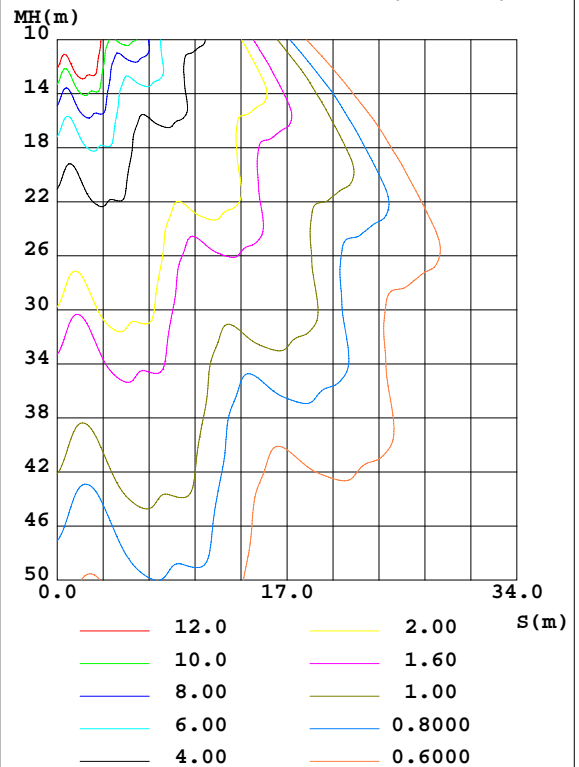
Test:U:120.00V I:0.3248A P:38.390W PF:0.9850 Freq:60.00Hz Lamp Flux:4636.99x1 lm		
NAME: Explosion Proof Light	TYPE: LED	WEIGHT:
SPEC.:	DIM.:	SERIAL No.:
MFR.: VENAS Co.,LIMITED	SUR.:	Shielding Angle:

DATA OF LAMP		PHOTOMETRIC DATA Eff: 120.79 lm/W			
MODEL	EX-40W OY50D120	Imax(cd)	2446	S/MH(C0/180)	1.25
NOMINAL POWER(W)	40	LOR(%)	100.0	S/MH(C90/270)	1.23
RATED VOLTAGE(V)	120-277	TOTAL FLUX(lm)	4637.0	$\eta$ UP,DN(C0-180)	3.5,45.2
NOMINAL FLUX(lm)	4636.99	CIE CLASS	DIRECT	$\eta$ UP,DN(C180-360)	3.7,47.6
LAMPS INSIDE	1	$\eta$ up(%)	7.2	CIBSE SHR NOM	0.75
TEST VOLTAGE(V)	120	$\eta$ down(%)	92.8	CIBSE SHR MAX	0.95

LUMINOUS INTENSITY DISTRIBUTION DIAGRAM



C0 PLANE ISOLUX DIAGRAM (UNIT:lx)



C Range: 0 - 360DEG  
 C Interval: 15.0DEG  
 Test Speed: HIGH  
 Temperature: 24.8DEG  
 Operators: Alan Wang  
 Test Date: 03 November 2022

$\gamma$  Range: 0 - 180DEG  
 $\gamma$  Interval: 1.0DEG  
 Test System: EVERFINE GO-R5000\_V2 SYSTEM V2.00.416  
 Humidity: 42.3%  
 Test Distance: 2.500m [K=1.0460]  
 Remarks:

## ZONAL FLUX DIAGRAM

## ZONAL FLUX DIAGRAM:

$\gamma$	C0	C45	C90	C135	C180	C225	C270	C315	$\gamma$	$\Phi$ zone	$\Phi$ total	%lum, lamp
10	2002	1370	2143	1532	1947	1601	2152	1545	0- 10	176.5	176.5	3.81,3.81
20	1276	890.7	1019	972.5	1375	1103	1462	1070	10- 20	398.4	574.9	12.4,12.4
30	1559	1173	1505	1158	1548	1144	1420	1171	20- 30	605.8	1181	25.5,25.5
40	1130	957.1	1166	920.9	1080	808.9	1078	854.5	30- 40	747.0	1928	41.6,41.6
50	1201	850.1	1230	858.7	988.1	828.3	1274	1016	40- 50	878.2	2806	60.5,60.5
60	622.1	459.3	639.7	500.2	750.7	614.0	835.6	556.0	50- 60	770.1	3576	77.1,77.1
70	282.0	193.1	253.6	213.3	308.1	220.0	270.3	215.5	60- 70	416.3	3992	86.1,86.1
80	136.6	81.73	107.6	115.8	162.2	136.2	187.3	141.5	70- 80	200.0	4192	90.4,90.4
90	45.95	36.88	44.61	51.80	88.52	70.25	90.54	66.66	80- 90	110.8	4303	92.8,92.8
100	48.51	43.55	50.11	49.08	50.62	42.63	46.84	43.37	90-100	61.48	4365	94.1,94.1
110	54.29	48.88	53.88	50.00	52.71	49.38	55.62	49.79	100-110	54.08	4419	95.3,95.3
120	60.07	51.57	60.05	52.89	60.20	50.85	60.58	50.36	110-120	53.50	4472	96.4,96.4
130	65.18	52.89	63.73	52.40	62.76	50.64	65.25	52.79	120-130	54.07	4526	97.6,97.6
140	64.53	55.29	61.83	51.93	60.49	51.12	62.41	52.41	130-140	46.78	4573	98.6,98.6
150	56.11	48.99	53.26	49.15	53.21	46.20	54.62	46.98	140-150	34.84	4608	99.4,99.4
160	37.88	36.61	35.22	33.12	34.03	36.69	36.61	38.39	150-160	21.50	4629	99.8,99.8
170	10.70	6.414	5.179	5.613	11.09	11.74	13.39	11.98	160-170	7.284	4637	100,100
180	2.221	2.245	2.263	2.281	2.234	2.221	2.277	2.269	170-180	0.4042	4637	100,100
DEG	LUMINOUS INTENSITY:cd									UNIT:lm		

Conical surface Flux(90deg): 2333.6 lm

%lum = 50.3%

%lamp = 50.3%

Conical surface Flux(120deg): 3575.9 lm

%lum = 77.1%

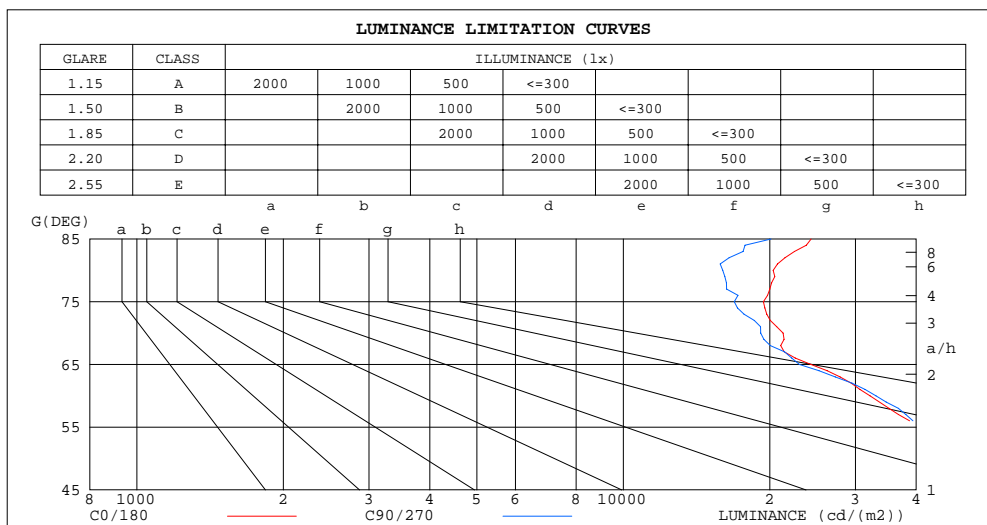
%lamp = 77.1%

C Range: 0 - 360DEG  
 C Interval: 15.0DEG  
 Test Speed: HIGH  
 Temperature: 24.8DEG  
 Operators: Alan Wang  
 Test Date: 03 November 2022

$\gamma$  Range: 0 - 180DEG  
 $\gamma$  Interval: 1.0DEG  
 Test System: EVERFINE GO-R5000\_V2 SYSTEM V2.00.416  
 Humidity: 42.3%  
 Test Distance: 2.500m [K=1.0460]  
 Remarks:

## LUMINANCE LIMITATION CURVES

Test:U:120.00V I:0.3248A P:38.390W PF:0.9850 Freq:60.00Hz Lamp Flux:4636.99x1 lm		
NAME: Explosion Proof Light	TYPE: LED	WEIGHT:
SPEC.:	DIM.:	SERIAL No.:
MFR.: VENAS Co.,LIMITED	SUR.:	Shielding Angle:



LUMINANCE cd/(m2)		
G(DEG)	C0/180	C90/270
85	24322	20123
80	20327	16006
75	19407	16909
70	21304	19157
65	24302	23013
60	32151	33059
55	40437	41384
50	48271	49434
45	45896	51713

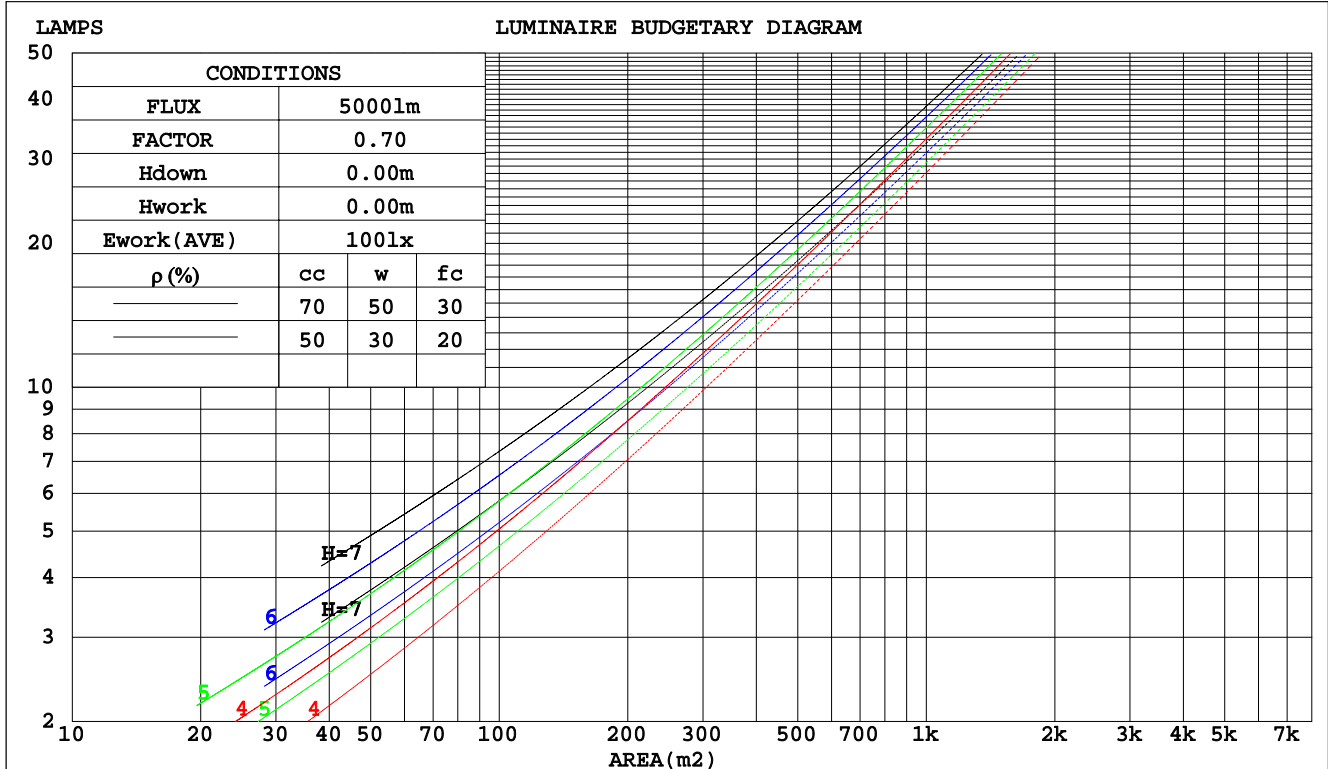
C Range: 0 - 360DEG  
C Interval: 15.0DEG  
Test Speed: HIGH  
Temperature: 24.8DEG  
Operators: Alan Wang  
Test Date: 03 November 2022

$\gamma$  Range: 0 - 180DEG  
 $\gamma$  Interval: 1.0DEG  
Test System: EVERFINE GO-R5000\_V2 SYSTEM V2.00.416  
Humidity: 42.3%  
Test Distance: 2.500m [K=1.0460]  
Remarks:

## CU AND LUMINAIRE BUDGETARY ESTIMATE DIAGRAM

Test:U:120.00V I:0.3248A P:38.390W PF:0.9850 Freq:60.00Hz Lamp Flux:4636.99x1 lm		
NAME: Explosion Proof Light	TYPE: LED	WEIGHT:
SPEC.:	DIM.:	SERIAL No.:
MFR.: VENAS Co.,LIMITED	SUR.:	Shielding Angle:

pcc	80%			70%			50%			30%			10%			0
pw	50%	30%	10%	50%	30%	10%	50%	30%	10%	50%	30%	10%	50%	30%	10%	0
pfc	20%			20%			20%			20%			20%			0
RCR	RCR:Room Cavity Ratio						Coefficients of Utilization(CU)									
0.0	1.17	1.17	1.17	1.14	1.14	1.14	1.07	1.07	1.07	1.01	1.01	1.01	.95	.95	.95	.93
1.0	1.03	.99	.95	.90	.96	.93	.94	.91	.88	.89	.87	.84	.84	.83	.81	.78
2.0	.90	.83	.78	.88	.82	.76	.83	.78	.74	.79	.74	.71	.75	.71	.68	.66
3.0	.79	.71	.65	.77	.70	.64	.73	.67	.62	.70	.64	.60	.66	.62	.58	.56
4.0	.70	.62	.55	.69	.61	.55	.65	.58	.53	.62	.56	.52	.59	.54	.50	.48
5.0	.63	.54	.48	.61	.53	.47	.58	.51	.46	.56	.50	.45	.53	.48	.44	.41
6.0	.57	.48	.42	.55	.47	.41	.53	.45	.40	.50	.44	.39	.48	.43	.38	.36
7.0	.51	.43	.37	.50	.42	.36	.48	.41	.35	.46	.39	.35	.44	.38	.34	.32
8.0	.47	.38	.33	.46	.38	.32	.44	.37	.32	.42	.36	.31	.40	.35	.30	.28
9.0	.43	.35	.29	.42	.34	.29	.40	.33	.28	.39	.32	.28	.37	.32	.27	.26
10.0	.39	.32	.26	.39	.31	.26	.37	.30	.26	.36	.30	.25	.34	.29	.25	.23



C Range: 0 - 360DEG  
 C Interval: 15.0DEG  
 Test Speed: HIGH  
 Temperature: 24.8DEG  
 Operators: Alan Wang  
 Test Date: 03 November 2022

γ Range: 0 - 180DEG  
 γ Interval: 1.0DEG  
 Test System: EVERFINE GO-R5000\_V2 SYSTEM V2.00.416  
 Humidity: 42.3%  
 Test Distance: 2.500m [K=1.0460]  
 Remarks:

## WEC AND CCEC

Test:U:120.00V I:0.3248A P:38.390W PF:0.9850 Freq:60.00Hz Lamp Flux:4636.99x1 lm		
NAME: Explosion Proof Light	TYPE: LED	WEIGHT:
SPEC.:	DIM.:	SERIAL No.:
MFR.: VENAS Co.,LIMITED	SUR.:	Shielding Angle:

pcc	80%			70%			50%			30%			10%			0	
pw	50%	30%	10%	50%	30%	10%	50%	30%	10%	50%	30%	10%	50%	30%	10%	0	
pfc	20%			20%			20%			20%			20%			0	
RCR	RCR:Room Cavity Ratio						Wall Exitance Coefficients(WEC)										
0.0																	
1.0	.298	.169	.054	.289	.165	.052	.271	.156	.050	.256	.147	.047	.241	.140	.045		
2.0	.279	.153	.047	.271	.149	.046	.255	.142	.044	.241	.135	.042	.228	.129	.041		
3.0	.259	.138	.041	.252	.135	.041	.238	.129	.039	.225	.123	.038	.214	.118	.037		
4.0	.240	.125	.037	.234	.122	.036	.221	.117	.035	.210	.113	.034	.199	.108	.033		
5.0	.223	.114	.033	.217	.112	.032	.206	.107	.032	.196	.103	.031	.186	.099	.030		
6.0	.208	.104	.030	.202	.102	.029	.192	.099	.029	.183	.095	.028	.174	.092	.027		
7.0	.194	.096	.027	.189	.094	.027	.180	.091	.026	.171	.088	.026	.163	.085	.025		
8.0	.181	.089	.025	.177	.087	.025	.169	.084	.024	.161	.082	.024	.154	.079	.023		
9.0	.170	.082	.023	.166	.081	.023	.159	.079	.022	.152	.076	.022	.145	.074	.021		
10.0	.160	.077	.021	.157	.076	.021	.150	.073	.021	.143	.071	.020	.137	.069	.020		

pcc	80%			70%			50%			30%			10%			0
pw	50%	30%	10%	50%	30%	10%	50%	30%	10%	50%	30%	10%	50%	30%	10%	0
pfc	20%			20%			20%			20%			20%			0
RCR	RCR:Room Cavity Ratio						Ceiling Cavity Exitance Coefficients(CCEC)									
0.0	.245	.245	.245	.210	.210	.210	.143	.143	.143	.082	.082	.082	.026	.026	.026	
1.0	.235	.212	.191	.201	.182	.164	.137	.125	.113	.079	.072	.066	.025	.023	.021	
2.0	.226	.188	.155	.194	.162	.134	.133	.112	.094	.077	.065	.055	.025	.021	.018	
3.0	.218	.170	.132	.187	.147	.114	.129	.102	.080	.074	.060	.047	.024	.019	.015	
4.0	.211	.157	.116	.181	.136	.101	.124	.095	.071	.072	.055	.042	.023	.018	.014	
5.0	.204	.147	.105	.175	.127	.091	.121	.089	.064	.070	.052	.038	.022	.017	.013	
6.0	.197	.138	.097	.169	.120	.084	.117	.084	.060	.068	.049	.035	.022	.016	.012	
7.0	.190	.132	.091	.164	.114	.079	.113	.080	.056	.066	.047	.033	.021	.015	.011	
8.0	.184	.126	.086	.158	.109	.075	.110	.077	.053	.064	.045	.032	.021	.015	.011	
9.0	.178	.121	.083	.154	.105	.072	.106	.074	.051	.062	.044	.031	.020	.014	.010	
10.0	.173	.117	.080	.149	.102	.070	.103	.071	.049	.060	.042	.030	.020	.014	.010	

C Range: 0 - 360DEG  
 C Interval: 15.0DEG  
 Test Speed: HIGH  
 Temperature: 24.8DEG  
 Operators: Alan Wang  
 Test Date: 03 November 2022

γ Range: 0 - 180DEG  
 γ Interval: 1.0DEG  
 Test System: EVERFINE GO-R5000\_V2 SYSTEM V2.00.416  
 Humidity: 42.3%  
 Test Distance: 2.500m [K=1.0460]  
 Remarks:

UGR(Unified Glare Rating) Table

Test:U:120.00V I:0.3248A P:38.390W PF:0.9850 Freq:60.00Hz Lamp Flux:4636.99x1 lm											
NAME: Explosion Proof Light					TYPE: LED			WEIGHT:			
SPEC.:					DIM.:			SERIAL No.:			
MFR.: VENAS Co.,LIMITED					SUR.:			Shielding Angle:			
ceiling/cavity	0.7	0.7	0.5	0.5	0.3	0.7	0.7	0.5	0.5	0.3	
walls	0.5	0.3	0.5	0.3	0.3	0.5	0.3	0.5	0.3	0.3	
working plane	0.2	0.2	0.2	0.2	0.2	0.2	0.2	0.2	0.2	0.2	
Room dimensions		Viewed crosswise				Viewed endwise					
x = 2H y = 2H	24.3	25.8	24.8	26.3	26.8	24.5	26.0	25.0	26.4	26.9	
	3H	25.1	26.4	25.6	26.9	27.4	25.1	26.5	25.6	26.9	27.5
	4H	25.4	26.6	25.9	27.1	27.7	25.4	26.7	25.9	27.1	27.7
	6H	25.7	26.9	26.3	27.4	27.9	25.6	26.8	26.2	27.3	27.8
	8H	25.9	27.0	26.4	27.5	28.1	25.7	26.8	26.3	27.3	27.9
	12H	26.0	27.1	26.6	27.6	28.2	25.8	26.9	26.4	27.4	28.0
4H	2H	24.3	25.6	24.9	26.1	26.6	24.6	25.8	25.1	26.3	26.8
	3H	25.3	26.3	25.8	26.9	27.5	25.4	26.5	26.0	27.0	27.6
	4H	25.7	26.7	26.3	27.2	27.8	25.9	26.8	26.4	27.3	27.9
	6H	26.2	27.0	26.8	27.6	28.2	26.2	27.0	26.8	27.6	28.2
	8H	26.4	27.2	27.0	27.8	28.4	26.3	27.1	26.9	27.7	28.3
	12H	26.7	27.4	27.3	28.0	28.6	26.5	27.2	27.1	27.8	28.4
8H	4H	25.8	26.6	26.4	27.1	27.7	26.0	26.8	26.6	27.3	28.0
	6H	26.4	27.0	27.0	27.6	28.2	26.5	27.1	27.1	27.7	28.4
	8H	26.7	27.3	27.3	27.9	28.5	26.7	27.3	27.3	27.9	28.5
	12H	27.0	27.6	27.7	28.2	28.9	26.9	27.5	27.6	28.1	28.8
12H	4H	25.8	26.5	26.4	27.1	27.7	26.0	26.7	26.6	27.3	28.0
	6H	26.4	27.0	27.0	27.5	28.2	26.5	27.1	27.2	27.7	28.4
	8H	26.7	27.2	27.4	27.9	28.6	26.8	27.3	27.4	27.9	28.6
CIE190: 2010											

CIE190: 2010  
Area: 0.0387005 m2

C Range: 0 - 360DEG  
C Interval: 15.0DEG  
Test Speed: HIGH  
Temperature: 24.8DEG  
Operators: Alan Wang  
Test Date: 03 November 2022

$\gamma$  Range: 0 - 180DEG  
 $\gamma$  Interval: 1.0DEG  
Test System: EVERFINE GO-R5000\_V2 SYSTEM V2.00.416  
Humidity: 42.3%  
Test Distance: 2.500m [K=1.0460]  
Remarks:

## UTILIZATION FACTORS TABLE

Test:U:120.00V I:0.3248A P:38.390W PF:0.9850 Freq:60.00Hz Lamp Flux:4636.99x1 lm		
NAME: Explosion Proof Light	TYPE: LED	WEIGHT:
SPEC.:	DIM.:	SERIAL No.:
MFR.: VENAS Co.,LIMITED	SUR.:	Shielding Angle:

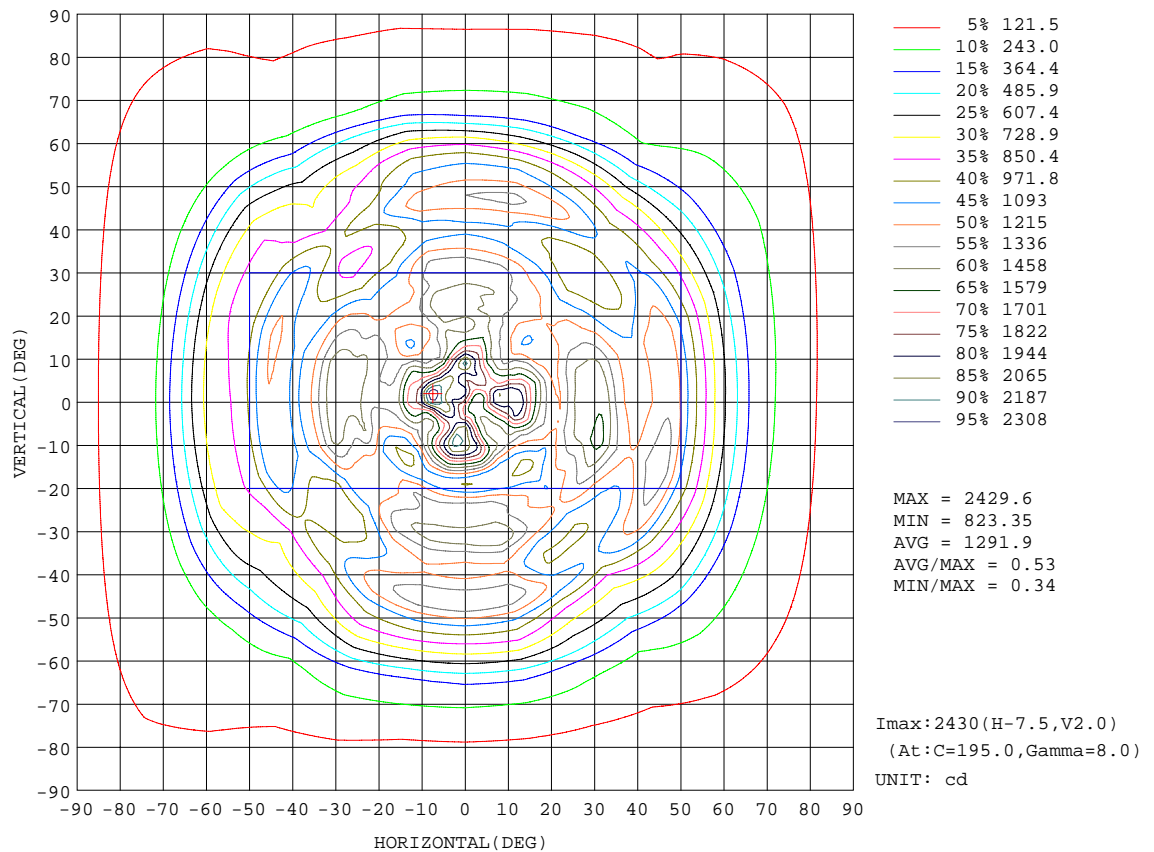
REFLECTANCE										
Ceiling	0.8	0.8	0.8	0.7	0.7	0.7	0.5	0.5	0.5	0
Walls	0.7	0.5	0.3	0.7	0.5	0.3	0.7	0.5	0.3	0
Working plane	0.2	0.2	0.2	0.2	0.2	0.2	0.2	0.2	0.2	0
ROOM INDEX	UTILIZATION FACTORS(PERCENT) $k(RI) \times RCR = 5$									
$k = 0.60$	55	43	36	54	43	36	52	42	36	29
0.80	65	54	46	64	53	46	62	52	45	38
1.00	74	63	56	73	62	55	70	63	55	47
1.25	82	71	64	80	70	63	76	68	62	54
1.50	87	77	70	85	75	69	81	73	67	59
2.00	93	85	78	91	83	77	87	80	75	66
2.50	97	89	83	95	88	82	90	84	79	70
3.00	100	94	88	98	91	86	93	88	83	73
4.00	104	98	94	101	96	92	96	92	88	77
5.00	107	102	97	104	99	95	98	94	91	80
ROOM INDEX	UF(total)									Direct
According to DIN EN 13032-2 2004			Suspended					SHRNOM = 1.25		

C Range: 0 - 360DEG  
 C Interval: 15.0DEG  
 Test Speed: HIGH  
 Temperature: 24.8DEG  
 Operators: Alan Wang  
 Test Date: 03 November 2022

$\gamma$  Range: 0 - 180DEG  
 $\gamma$  Interval: 1.0DEG  
 Test System: EVERFINE GO-R5000\_V2 SYSTEM V2.00.416  
 Humidity: 42.3%  
 Test Distance: 2.500m [K=1.0460]  
 Remarks:

## ISOCANDELA DIAGRAM

Test:U:120.00V I:0.3248A P:38.390W PF:0.9850 Freq:60.00Hz Lamp Flux:4636.99x1 lm		
NAME: Explosion Proof Light	TYPE: LED	WEIGHT:
SPEC.:	DIM.:	SERIAL No.:
MFR.: VENAS Co.,LIMITED	SUR.:	Shielding Angle:



C Range: 0 - 360DEG  
C Interval: 15.0DEG  
Test Speed: HIGH  
Temperature: 24.8DEG  
Operators: Alan Wang  
Test Date: 03 November 2022

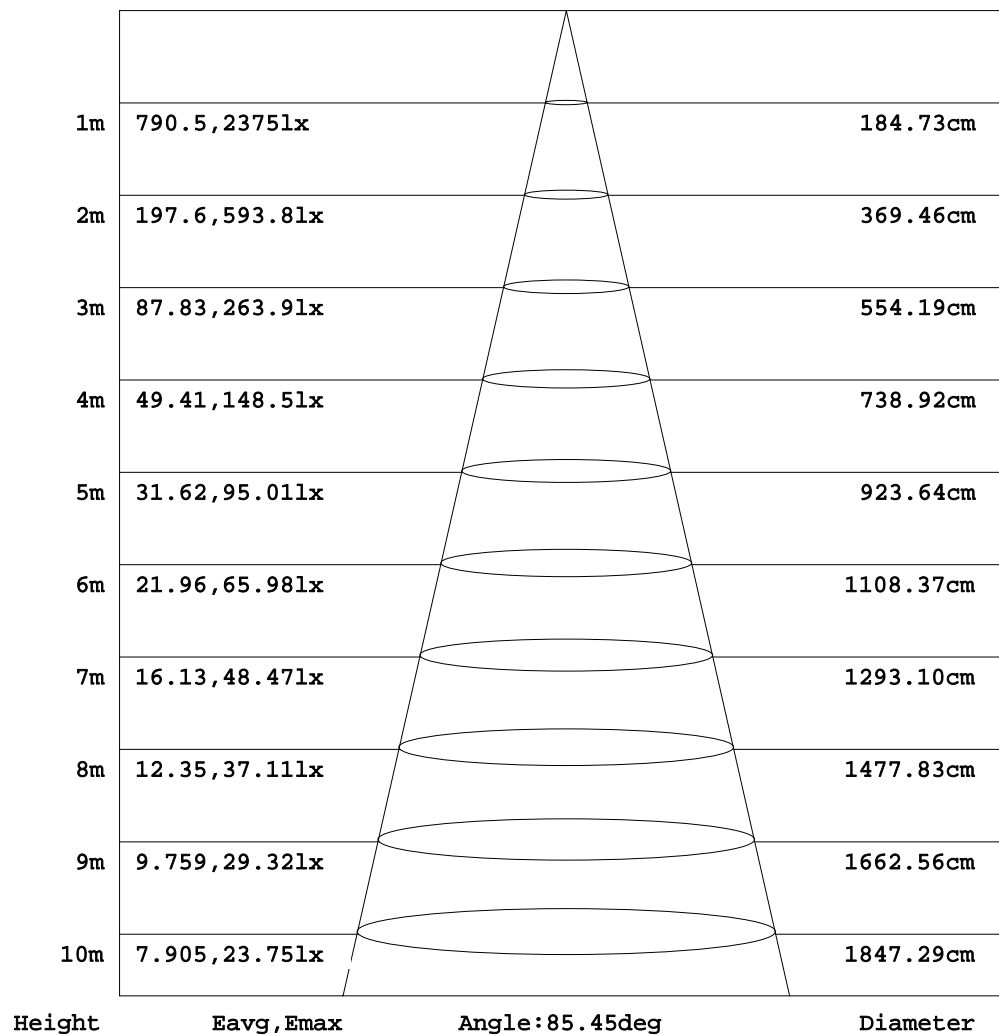
$\gamma$  Range: 0 - 180DEG  
 $\gamma$  Interval: 1.0DEG  
Test System: EVERFINE GO-R5000\_V2 SYSTEM V2.00.416  
Humidity: 42.3%  
Test Distance: 2.500m [K=1.0460]  
Remarks:



## AAI Figure

Test:U:120.00V I:0.3248A P:38.390W PF:0.9850 Freq:60.00Hz Lamp Flux:4636.99x1 lm		
NAME: Explosion Proof Light	TYPE: LED	WEIGHT:
SPEC.:	DIM.:	SERIAL No.:
MFR.: VENAS Co.,LIMITED	SUR.:	Shielding Angle:

Flux out:2160 lm



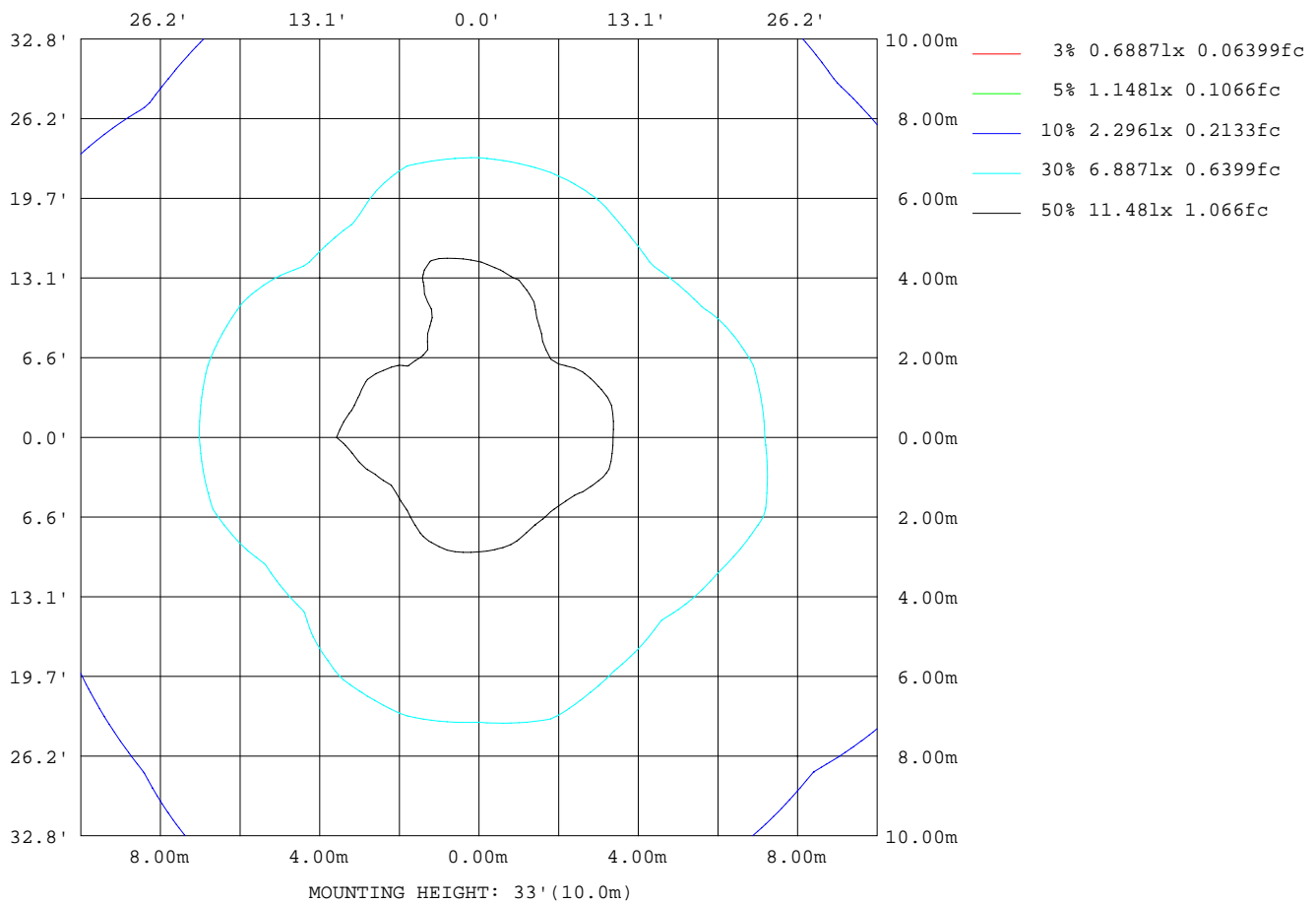
Note:The Curves indicate the illuminated area and the average illumination when the luminaire is at different distance.

C Range: 0 - 360DEG  
 C Interval: 15.0DEG  
 Test Speed: HIGH  
 Temperature: 24.8DEG  
 Operators:Alan Wang  
 Test Date:03 November 2022

γ Range: 0 - 180DEG  
 γ Interval: 1.0DEG  
 Test System:EVERFINE GO-R5000\_V2 SYSTEM V2.00.416  
 Humidity: 42.3%  
 Test Distance:2.500m [K=1.0460]  
 Remarks:

## ISOLUX DIAGRAM

Test:U:120.00V I:0.3248A P:38.390W PF:0.9850 Freq:60.00Hz Lamp Flux:4636.99x1 lm		
NAME: Explosion Proof Light	TYPE: LED	WEIGHT:
SPEC.:	DIM.:	SERIAL No.:
MFR.: VENAS Co.,LIMITED	SUR.:	Shielding Angle:



C Range: 0 - 360DEG  
C Interval: 15.0DEG  
Test Speed: HIGH  
Temperature: 24.8DEG  
Operators: Alan Wang  
Test Date: 03 November 2022

$\gamma$  Range: 0 - 180DEG  
 $\gamma$  Interval: 1.0DEG  
Test System: EVERFINE GO-R5000\_V2 SYSTEM V2.00.416  
Humidity: 42.3%  
Test Distance: 2.500m [K=1.0460]  
Remarks:

## LED Avg.L Report

Test:U:120.00V I:0.3248A P:38.390W PF:0.9850 Freq:60.00Hz Lamp Flux:4636.99x1 lm		
NAME: Explosion Proof Light	TYPE: LED	WEIGHT:
SPEC.:	DIM.:	SERIAL No.:
MFR.: VENAS Co.,LIMITED	SUR.:	Shielding Angle:

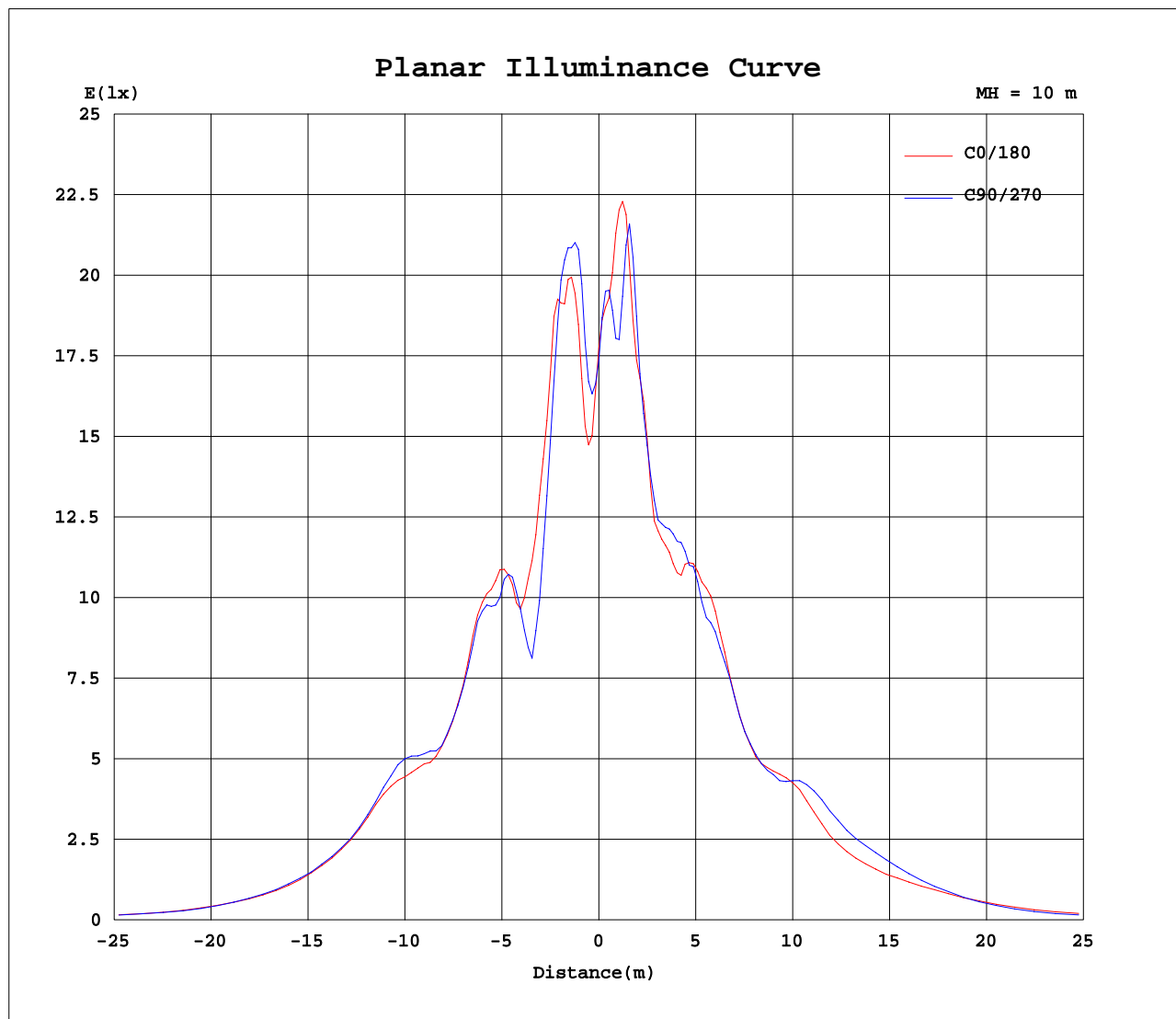
AvgL	cd/m2
L_0~180(65)av	28244
L_0~180(75)av	19580
L_0~180(85)av	30227
L_90~270(65)av	25552
L_90~270(75)av	19363
L_90~270(85)av	29572
L_45(65)av	19706
L_45(75)av	15871
L_45(85)av	25207

Standard: GB/T 29293-2012

C Range: 0 - 360DEG  
C Interval: 15.0DEG  
Test Speed: HIGH  
Temperature: 24.8DEG  
Operators: Alan Wang  
Test Date: 03 November 2022

$\gamma$  Range: 0 - 180DEG  
 $\gamma$  Interval: 1.0DEG  
Test System: EVERFINE GO-R5000\_V2 SYSTEM V2.00.416  
Humidity: 42.3%  
Test Distance: 2.500m [K=1.0460]  
Remarks:

## Planar Illuminance Curve



C Range: 0 - 360DEG  
C Interval: 15.0DEG  
Test Speed: HIGH  
Temperature: 24.8DEG  
Operators: Alan Wang  
Test Date: 03 November 2022

$\gamma$  Range: 0 - 180DEG  
 $\gamma$  Interval: 1.0DEG  
Test System: EVERFINE GO-R5000\_V2 SYSTEM V2.00.416  
Humidity: 42.3%  
Test Distance: 2.500m [K=1.0460]  
Remarks:

## LUMINOUS DISTRIBUTION INTENSITY DATA

Test:U:120.00V I:0.3248A P:38.390W PF:0.9850 Freq:60.00Hz Lamp Flux:4636.99x1 lm																		
NAME: Explosion Proof Light									TYPE: LED					WEIGHT:				
SPEC.:									DIM.:					SERIAL No.:				
MFR.: VENAS Co.,LIMITED									SUR.:					Shielding Angle:				

Table--1

UNIT: cd

C(DEG) γ (DEG)	0	15	30	45	60	75	90	105	120	135	150	165	180	195	210	225	240	255	270
0	1775	1772	1764	1756	1749	1745	1736	1730	1727	1729	1735	1739	1775	1772	1764	1756	1749	1745	1736
5	1699	1647	1485	1452	1553	1771	1996	1967	1904	1947	2060	2150	2155	2089	2072	2068	2005	1918	1825
10	2002	1824	1496	1370	1513	1948	2143	2240	1903	1532	1344	1547	1947	2029	1836	1601	1593	1871	2152
15	1719	1705	1328	1217	1219	1433	1461	1552	1389	1180	1174	1371	1491	1512	1512	1230	1250	1483	1529
20	1276	1305	1160	891	989	997	1019	1028	1046	972	994	1224	1375	1330	1335	1103	1214	1491	1462
25	1438	1405	1237	1095	1233	1398	1440	1383	1328	1146	1183	1446	1489	1546	1397	1246	1249	1528	1479
30	1559	1575	1324	1173	1264	1534	1505	1495	1429	1158	1170	1483	1548	1549	1355	1144	1158	1412	1420
35	1321	1429	1201	1059	1147	1374	1310	1330	1234	961	938	1212	1261	1272	1184	975	1036	1272	1260
40	1130	1221	1031	957	960	1204	1166	1204	1103	921	884	1082	1080	1071	981	809	873	1052	1078
45	1256	1390	1238	1076	1135	1427	1415	1408	1283	1033	966	1216	1204	1228	1139	940	954	1199	1223
50	1201	1249	1097	850	957	1183	1230	1187	1082	859	790	978	988	1053	1024	828	955	1197	1274
55	898	909	804	648	726	900	919	909	874	687	688	823	836	887	873	727	851	1062	1108
60	622	627	581	459	527	631	640	632	635	500	563	729	751	771	763	614	670	829	836
65	397	380	335	260	286	370	376	349	354	307	375	488	526	539	539	406	459	518	459
70	282	258	240	193	216	250	254	252	250	213	220	283	308	303	285	220	228	279	270
75	194	167	160	131	143	164	169	178	187	166	180	199	198	199	198	159	183	212	219
80	137	119	106	81.7	93.4	104	108	104	120	116	145	166	162	169	170	136	163	186	187
85	82.0	73.1	69.6	57.5	68.3	69.7	67.9	66.4	71.8	75.0	106	126	122	129	132	102	120	134	132
90	46.0	46.5	46.4	36.9	45.9	44.2	44.6	44.2	49.7	51.8	78.5	94.0	88.5	91.6	94.1	70.3	86.4	94.9	90.5
95	46.8	47.1	48.5	40.1	49.8	46.8	47.4	46.7	52.1	51.4	68.9	74.6	73.3	74.6	74.4	54.5	59.3	61.5	56.1
100	48.5	48.8	50.3	43.6	52.5	49.5	50.1	48.7	53.0	49.1	59.3	56.8	50.6	46.5	50.1	42.6	48.0	46.9	46.8
105	51.9	52.4	52.5	46.4	53.9	51.2	52.4	51.3	53.7	48.4	51.6	51.0	51.4	50.4	53.2	46.7	51.4	50.4	51.7
110	54.3	54.2	53.9	48.9	55.5	52.9	53.9	51.9	55.0	50.0	53.1	51.4	52.7	52.2	54.9	49.4	53.6	53.0	55.6
115	50.4	51.7	52.8	47.0	55.2	54.1	54.1	53.7	55.8	49.2	52.2	53.2	53.2	53.9	55.0	47.9	53.4	52.3	53.4
120	60.1	61.3	60.1	51.6	60.1	60.4	60.0	59.2	60.5	52.9	56.8	59.8	60.2	60.6	59.2	50.9	57.8	59.8	60.6
125	63.7	65.2	63.2	54.3	62.1	62.9	63.4	61.8	62.0	52.6	57.4	62.3	63.5	63.3	61.1	52.8	59.0	61.8	63.6
130	65.2	65.2	62.2	52.9	62.1	63.7	63.7	61.9	61.3	52.4	56.0	61.0	62.8	62.5	60.2	50.6	59.0	62.6	65.3
135	66.5	67.3	63.5	54.4	62.7	65.1	64.4	62.8	60.7	51.9	56.2	60.6	62.6	61.3	58.6	50.5	57.4	61.5	64.2
140	64.5	64.8	60.6	55.3	59.2	61.0	61.8	60.1	58.6	51.9	55.4	57.4	60.5	58.5	55.7	51.1	56.6	59.7	62.4
145	61.6	61.0	57.4	53.8	56.6	57.8	58.8	56.9	55.7	50.9	52.6	53.2	56.6	55.2	51.6	48.2	51.8	54.9	58.2
150	56.1	54.5	51.0	49.0	53.3	52.2	53.3	51.9	52.0	49.1	49.3	50.9	53.2	53.0	49.5	46.2	49.3	52.3	54.6
155	51.9	49.8	48.0	45.7	48.8	46.6	48.1	47.1	46.7	43.7	43.7	44.4	48.1	46.4	45.1	44.2	44.4	45.1	48.4
160	37.9	37.7	36.8	36.6	38.0	36.8	35.2	34.8	34.5	33.1	34.0	33.0	34.0	34.0	35.0	36.7	37.3	36.6	36.6
165	25.7	25.6	25.0	24.0	24.9	23.7	19.9	22.1	20.6	18.5	22.5	23.3	25.1	25.3	26.5	28.3	29.3	29.1	27.6
170	10.7	10.6	8.96	6.41	5.50	5.26	5.18	5.29	5.45	5.61	5.07	6.79	11.1	11.5	12.4	11.7	11.8	13.2	13.4
175	2.06	2.05	2.02	2.02	2.07	2.12	2.11	2.10	2.07	2.06	2.10	2.13	2.50	2.50	2.51	2.50	2.48	2.50	2.65
180	2.22	2.21	2.22	2.24	2.27	2.26	2.26	2.25	2.25	2.28	2.31	2.31	2.23	2.23	2.22	2.22	2.24	2.27	2.28

C Range: 0 - 360DEG

C Interval: 15.0DEG

Test Speed: HIGH

Temperature: 24.8DEG

Operators: Alan Wang

Test Date: 03 November 2022

γ Range: 0 - 180DEG

γ Interval: 1.0DEG

Test System: EVERFINE GO-R5000\_V2 SYSTEM V2.00.416

Humidity: 42.3%

Test Distance: 2.500m [K=1.0460]

Remarks:

## LUMINOUS DISTRIBUTION INTENSITY DATA

Test:U:120.00V I:0.3248A P:38.390W PF:0.9850 Freq:60.00Hz Lamp Flux:4636.99x1 lm		
NAME: Explosion Proof Light	TYPE: LED	WEIGHT:
SPEC.:	DIM.:	SERIAL No.:
MFR.: VENAS Co.,LIMITED	SUR.:	Shielding Angle:

Table--2

UNIT: cd

C(DEC) γ (DEC)	285	300	315	330	345													
0	1730	1727	1729	1735	1739													
5	1810	1855	1794	1689	1640													
10	1917	1610	1545	1631	2025													
15	1603	1356	1258	1481	1739													
20	1486	1289	1070	1165	1267													
25	1437	1313	1189	1208	1395													
30	1417	1249	1171	1254	1499													
35	1204	1110	950	1103	1295													
40	1070	963	855	947	1141													
45	1216	1107	1011	1032	1259													
50	1308	1191	1016	1076	1218													
55	1091	955	825	850	935													
60	772	676	556	606	658													
65	432	349	316	389	411													
70	267	255	215	270	311													
75	218	209	179	215	226													
80	181	173	142	172	170													
85	135	131	106	117	111													
90	94.6	91.3	66.7	66.2	57.8													
95	56.1	58.1	45.7	53.3	51.6													
100	45.7	48.5	43.4	51.2	50.1													
105	49.8	51.7	46.1	53.5	52.8													
110	54.1	55.1	49.8	56.3	55.1													
115	51.7	53.2	46.5	53.6	52.2													
120	60.1	58.7	50.4	59.0	60.1													
125	63.4	62.2	53.8	61.2	63.5													
130	64.1	61.9	52.8	61.9	64.7													
135	63.2	62.8	52.0	63.3	65.5													
140	61.1	59.6	52.4	61.2	63.1													
145	56.5	56.8	51.0	58.1	60.1													
150	52.2	50.5	47.0	51.4	53.3													
155	47.2	48.1	48.1	50.3	51.4													
160	36.2	36.3	38.4	37.6	38.8													
165	26.8	28.3	27.4	27.2	29.6													
170	13.2	13.2	12.0	11.2	11.3													
175	2.65	2.57	2.59	2.53	2.49													
180	2.28	2.26	2.27	2.28	2.30													

C Range: 0 - 360DEG

C Interval: 15.0DEG

Test Speed: HIGH

Temperature: 24.8DEG

Operators: Alan Wang

Test Date: 03 November 2022

γ Range: 0 - 180DEG

γ Interval: 1.0DEG

Test System: EVERFINE GO-R5000\_V2 SYSTEM V2.00.416

Humidity: 42.3%

Test Distance: 2.500m [K=1.0460]

Remarks: