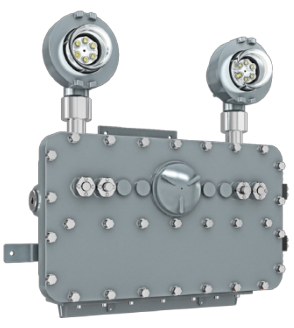


HAZARDOUS LOCATIONS

EXS03B SERIES



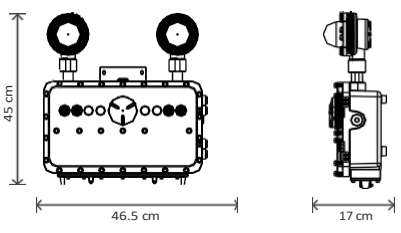
TECHNICAL DATA

Input voltage	100 - 277 V~ (Multivoltage)
Input frequency	50 / 60 Hz
Dimmable	0 - 10 V
Color temperature	5000K
Operating temperature	0 to 40°C
Harmonic distortion	<20%
Power factor	0.8
Opening angle	120°
Battery	Nickel-Cadmium, maintenance-free 3.6 V, 600 mAh
Charging time	24 hours
Working time	180 minutes
Mounting	Superimposed (included)
Ranking	IP66
Body	Aluminum Alloy
Optics	Polycarbonate
Color	Gray



DIMENSIONS

EXS02-B



JUNGO
LIGHTING

Locate evacuation exits during power outages with emergency lighting for **up to 180 minutes**. This LED luminaire features with two steerable heads, a Nickel-Cadmium battery rechargeable in just 24 hours, self-diagnostic button and LED indicator to confirm battery charge status. With this emergency luminaire, you can be sure that you will have the right lighting to evacuate quickly and safely mishaps in the event of an emergency in hazardous areas.

CERTIFICATES



Model	Power rating	Luminous efficiency	Luminous flux
EXS03-B	10 W	130 lm/W	1300 lumens



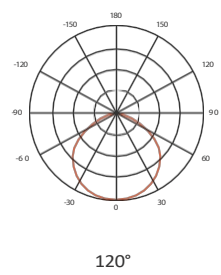
Intertek - North America
Class I, Division 1, Groups C, D
Class I, Division 2, Groups A, B, C, D
Class II, Division 1, Groups E, F, G
Class II, Division 2, Groups F, G
Class III Class III



Intertek - North America
UL844, UL924

Other Classifications
IP66

PHOTOMETRIC DISTRIBUTION



PHOTOMETRY

To download the IES file go to: Jungo.Lighting/resources

ORDERING GUIDE

1 Series
EXS03- B

Code example:

1 Series
|
EXS03-B