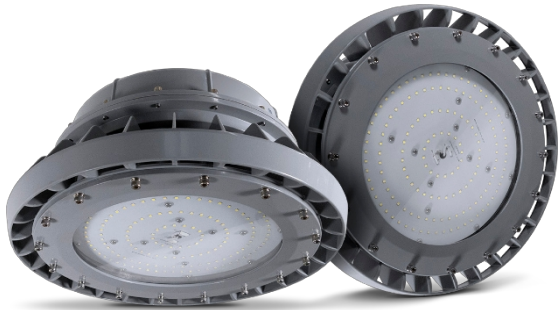


HAZARDOUS LOCATIONS

B SERIES

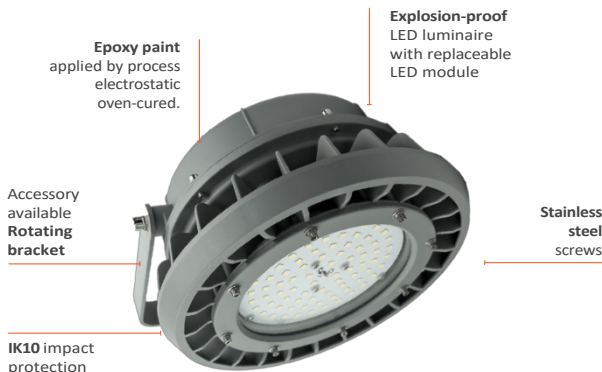


TECHNICAL DATA

Input voltage	100 - 277 V~ / 200 - 480 V~
Input frequency	50 / 60 Hz
Dimmable	0 - 10 V (optional)
Color temperature	5000K
IRC	>70
Operating temperature	-40 to 60 °C
Harmonic distortion	<10%
Power factor	0.90
Opening angle	40°, 60°, 90° or 120°.
Mounting	Overlay: Wall Wall mounted with junction box Ceiling Ceiling with junction box
Ranking	IP66
Impact resistance	IK08
Surge protection	10 kV
Light maintenance @100,000 hours	0.86 *Projected L70 (12K) ≥ 72,000 hours according to IES TM-21
Body	Die-cast aluminum alloy A383
Optics	Borosilicate
Housing	Stainless steel
Color	Black



KEY FEATURES



JUNGO
LIGHTING

Certified for use in **hazardous locations**, the **B Series LED luminaires** demonstrate high efficiency and optimum quality. Their compact design with versatility of mounting makes it ideal for large areas of environments extreme and hazardous conditions with the presence of snow, water, wind, flammable vapors or gases and combustible dusts

CERTIFICATES



Model	Power rating	Luminous efficiency	Luminous flux
EXB-20	20 W	140 lm/W	2,800 lumens
EXB-40	40 W	140 lm/W	5,600 lumens
EXB-60	60 W	140 lm/W	8,400 lumens
EXB-80	80 W	140 lm/W	11,200 lumens
EXB-100	100 W	140 lm/W	14,000 lumens
EXB-120	120 W	140 lm/W	16,800 lumens
EXB-150	150 W	140 lm/W	21,000 lumens
EXB-200	200 W	140 lm/W	28,000 lumens
EXB-250	250 W	140 lm/W	35,000 lumens
EXB-300	300 W	140 lm/W	42,000 lumens
EXB-400	400 W	140 lm/W	56,000 lumens



ATEX - European Union

II 3 G Ex ec IIC IIC T6...T3 Gc
II 2 D Ex tb IIIC T85°C...T100°C Db
II 2 G Ex eb mb IIC T5...T6 Gb
II 2 D Ex tb IIIC T80°C...T100°C Db



IECEx - International

Ex ec IIC IIC T6...T3 Gc
Ex tb IIIC T85°C...T100°C Db
Ex eb mb IIC T5...T6 Gb
Ex tb IIIC T80°C...T100°C Db



Intertek - North America

Class I, Division 2, Groups A, B, C, D
Class II, Division 1, Groups E, F, G
Class II, Division 2, Groups F, G
Class III



Intertek - North America

UL1598, UL1598A



ABS Type Approved

Other Classifications

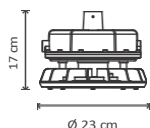
IP66
IK10



DIMENSIONS

EXB-20W / EX-60W

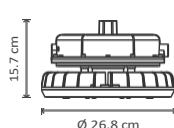
4.15 kg



Light distribution 40°, 60°, 90° or 120°.

EXB-80W / EX-100W

6.95 kg

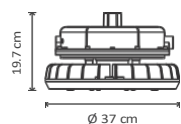


Light distribution 40°, 60°, 90° or 120°.

EXB-120W / EXB-150W

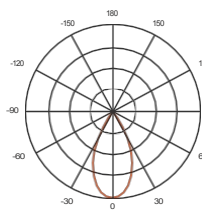
/ EXB-200W

8.3 kg

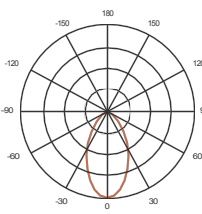


Light distribution 40°, 60°, 90° or 120°.

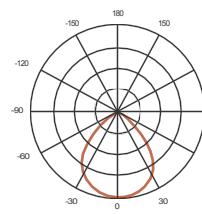
PHOTOMETRIC DISTRIBUTION



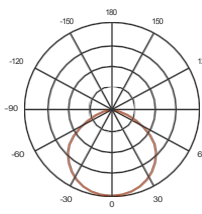
40°



60°



90°



120°

ADDITIONAL ACCESSORIES



Rotating Bracket
Code: EX-BRACKET



Globe optics
Code: EX-GLOBE



Protective grille
Code: EX-WIREWARD



Junction box
Code: EX-JOI



Installation hook
Code: EX-HOOK



Angled threaded pipe
Code: EX-WPIPE



Threaded pipe
Code: EX-SPIPE



Mounting arm
Code: EX-MARM



25° pipe support
Code: EX-25SUPPORT



90° pipe support
Code: EX-90SUPPORT



Mounting arm for junction box
Code: EX-DARM



Chain for suspended mounting
Code: EX-PCH

ORDERING GUIDE

1 Series	2 Model
EXB	20 W
	40 W
	60 W
	80 W
	100 W
	120 W
	150 W
	200 W
	250 W
	300 W
	400 W

3 Power supply
S Standard
D Dimmable

4 Opening angle
1 40°
2 60°
3 90°
4 120°

5 Voltage
S 100 - 277 V~
H 200 - 480 V~

Code example:

1 Series
3 Power supply
5 Voltage
EXB **60W** **S** **1** **S**
2 Model
4 Opening angle



Different forms of installation for different applications thanks to its **wide range of accessories**

It has the most important **international listings and certifications** important to the industry

Available accessories: **borosilicate optics globe valve and stainless steel protective grating**



APPLICATIONS

Oil and gas industry

- Oil production and refineries
- Oil loading and transportation
- Oil sales and storage
- Liquefied Natural Gas (LNG) Industry

Chemical industry

- Paint production and handling facilities
- Chemical production and storage

Oceanic, marine and aerospace areas

- Installations, platforms and offshore structures
- Aerospace production and cleaning rooms
- Operations on seagoing vessels

Food and alcohol industry

- Production and storage of flour and other particulates
- Distillation and food production
- Production of alcoholic beverages

Metal treatment

- Metal and aluminum plants
- Pumping stations of any environment
- Metal fabrication and casting

Other areas with high presence of moisture and dust, steam and elevated temperatures